

IBD182 EXAR XR17V352 Mini PCI-E Serial Ports Adaptor Card

IBD182 User guide 1.0

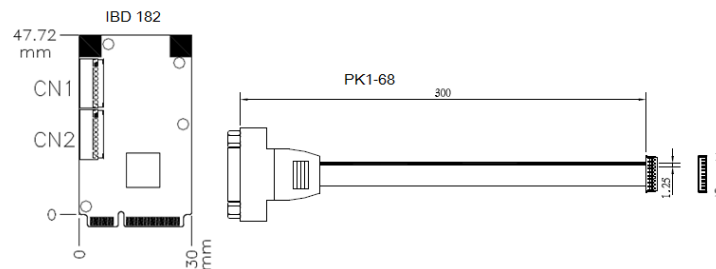
Connectors pin definition

CN1 CN2: COM1/2 Serial Ports

Matching connector: Molex P/N 51021-0900

Pin #	Signal Name
1	DCD, Data carrier detect
2	RXD, Receive data
3	CTS, Clear to send
4	GND, ground
5	TXD, Transmit data
6	RTS, Request to send
7	DSR, Data set ready
8	DTR, Data terminal ready
9	RI, Ring indicator

IBD182 and Pk1-68 Mechanical Drawing

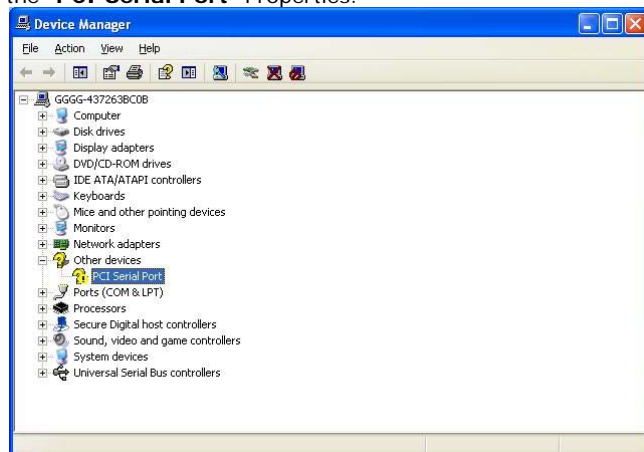


IBD 182 x 1 and PK1-68 x 2

IBD182 COM PORT DRIVERS are available at www.ibase.com.tw/2009/drivers.html

Mini PCI-E Serial Ports Driver Installation

1. In the Windows Device Manager, 'Other devices' shown below, right click the "PCI Serial Port" Properties.

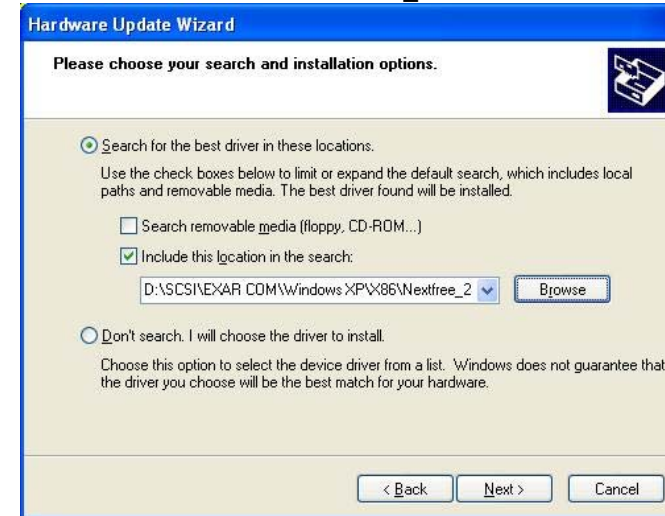


2. In the PCI Serial Port Properties screen, click **Reinstall Driver**.

3. In the Hardware Update Wizard screen, select "**No, not this time**" and click **Next** to continue.

4. Select "**Install from a list or specific location (Advanced)**", and click **Next** to continue.

5. Choose "**search**" and "**installation**" options, click the checkbox of "**Include this location in the search**", and click **Browse** to find the driver's path in the CD provided or enter the path directly - `\\SCSI\\EXAR COM\\Windows XP\\X86\\Nextfree_24`



6. Click **Continue Anyway**.



7. Click **Finish** to close the wizard.

8. There are two serial ports. Therefore, the Hardware Update Wizard procedure will be repeated for the other serial port.