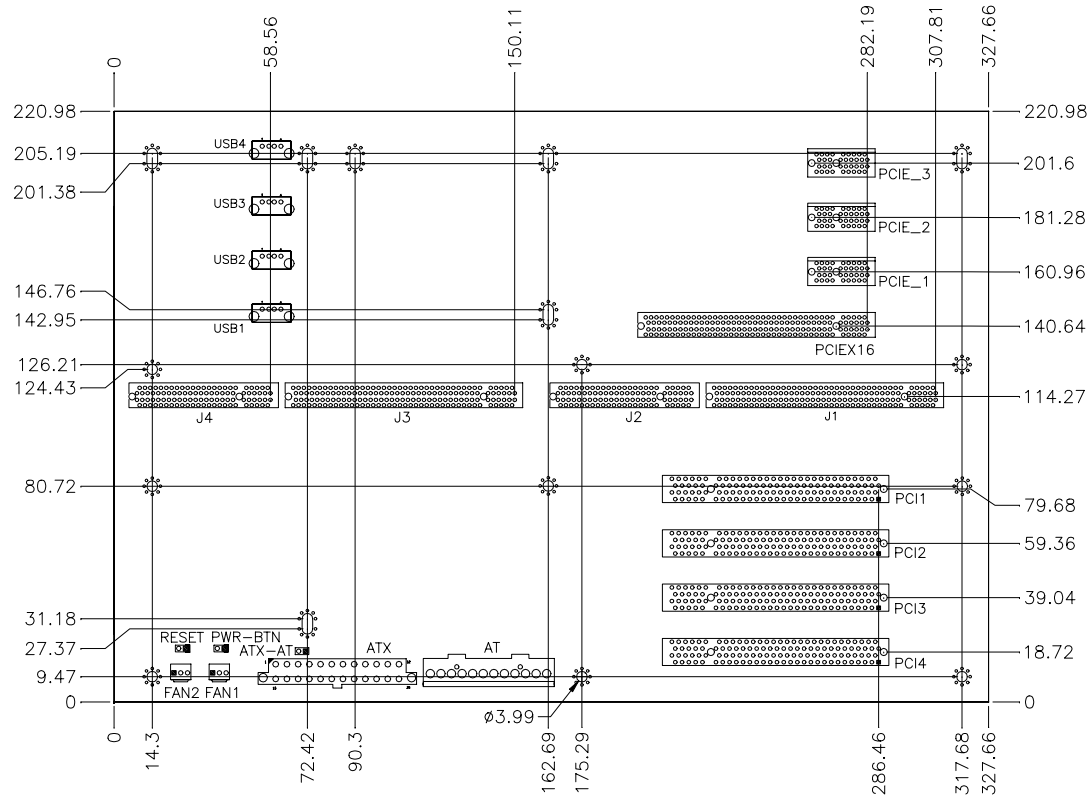


IP380 USER GUIDE

Dimensions:



4 PCI Slot Routing List :

PCI signal	PCI1	PCI2	PCI3	PCI4
IDSEL	AD31	AD30	AD29	AD28
INTA#	B	C	D	A
INTB#	C	D	A	B
INTC#	D	A	B	C
INTD#	A	B	C	D
REQ#	0	1	2	3
GNT#	0	1	2	3

Remarks : (32 bits /5V)

PCI-Express slots:

PCIEX16: 16-lane PCI Express port(x16 PCI Express port) intended for graphics.

PCIE_1~PCIE_3 : General x1 PCI Express port supported.

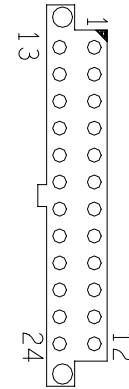
RESET: SHB hardware RESET bottom connector.

PWR-BTN: SHB ATX power ON/OFF connector.

ATX-AT: ATX / ATX power supply switch selection.

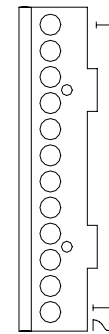
Connector Pin Assignment :

ATX1: ATX Power Supply Connector



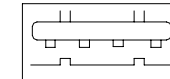
Signal Name	Pin #	Pin #	Signal Name
3.3V	13	1	3.3V
-12V	14	2	3.3V
Ground	15	3	Ground
PS-ON	16	4	+5V
Ground	17	5	Ground
Ground	18	6	+5V
Ground	19	7	Ground
-5V	20	8	Power good
+5V	21	9	5VSB
+5V	22	10	+12V
+5V	23	11	+12V
Ground	24	12	+3.3V

AT Power Supply Connector



Pin #	Signal Name
1	Power Good
2	+5V
3	+12V
4	-12V
5	GND
6	GND
7	GND
8	GND
9	-5V
10	+5V
11	+5V
12	+5V

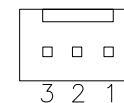
USB Connector



Pin	Signal Name
1	Ground
2	USB+
3	USB-
4	Vcc

Remark: USB0~USB4 are derived from SHB.

FAN1, FAN2: Fan Power Connector



Pin #	Signal Name
1	Ground
2	+12V
3	Rotation detection